



## ROOMS

- **Upper-deck sea-view room**

25-30 sqm | Mirabello Bay views | double bedroom

- **Upper-deck ocean-view room**

25-30 sqm | Mirabello Bay & Mediterranean Sea views | double bedroom

- **Upper-deck Infinity blue room**

25-30 sqm | Mirabello Bay & Mediterranean Sea views | double bedroom

- **Juniorsuite sea-view lower-deck**

38sqm | Ground Floor | Mirabello Bay views | double bedroom

- **One bedroom suite upper-deck sea-view**

53 sqm | Mirabello Bay views | double bedroom | living area

- **Ocean-view bungalow**

25-32 sqm | Mirabello Bay & Mediterranean Sea views | ground floor

- **Superior suite sharing pool sea-view**

38 sqm | Mirabello Bay | ground floor | semi-private pool

- **Superior suite sharing pool ocean-view**

38 sqm | Mirabello Bay & Mediterranean Sea views | ground floor | semi-private pool

- **Waterfall suite with private pool**

61 sqm | Mirabello Bay views | ground floor | private pool with waterfall

Waterfall suite with private pool

---

## IN-ROOM AMENITIES

Complimentary Wifi / air conditioning / direct-dial phone / satellite LCD tv / safety deposit boxes / minibar / twin beds or double beds / bathrobes & slippers / bathroom amenities

---

## HOTEL FACILITIES & SERVICES

24 hour reception / express check-in / money exchange service / organised excursions / laundry and dry cleaning service / room service / poolside waiter service/ internet corner / library / late check-out / rent-a-car / doctor on call / hairdresser upon request / parking area / complimentary WiFi / 'mock' infinity pool / private beach / two restaurants / two bars / water sports / Ananea Wellness by Aegeo Spa / tennis courts / gym / InBlu boutique / TV & video lounge / games room / table tennis / darts / billiards / themed nights

---

## EAT & DRINK

- **Amalthea Main Restaurant** (Early Breakfast / Continental: 05:00-07:00 upon request, Breakfast /Open buffet: 07:00-10:00, Late Breakfast 10 .00 - 10.45

- )Dinner / buffet & service: 19:00-21:30) Cretan, Greek and international favorites, with themed nights and special menus available

- **Inblu All Day Lounge Bar Restaurant** (Opening Hours: 11:00-23.00) Al fresco, a la carte dining, Coffee & drinks overlooking the beach

- **Bacchus Lobby Bar** (Opening Hours: 11:00-00.30)

Hot drinks, alcoholic beverages and fresh juices served in an elegant setting by the pool

- **Island Beach Bar** (Opening Hours: 11:00-19:00)

Hot & cold soft drinks, exotic cocktails and light snacks served by the hotel's private beach

# ROOMS

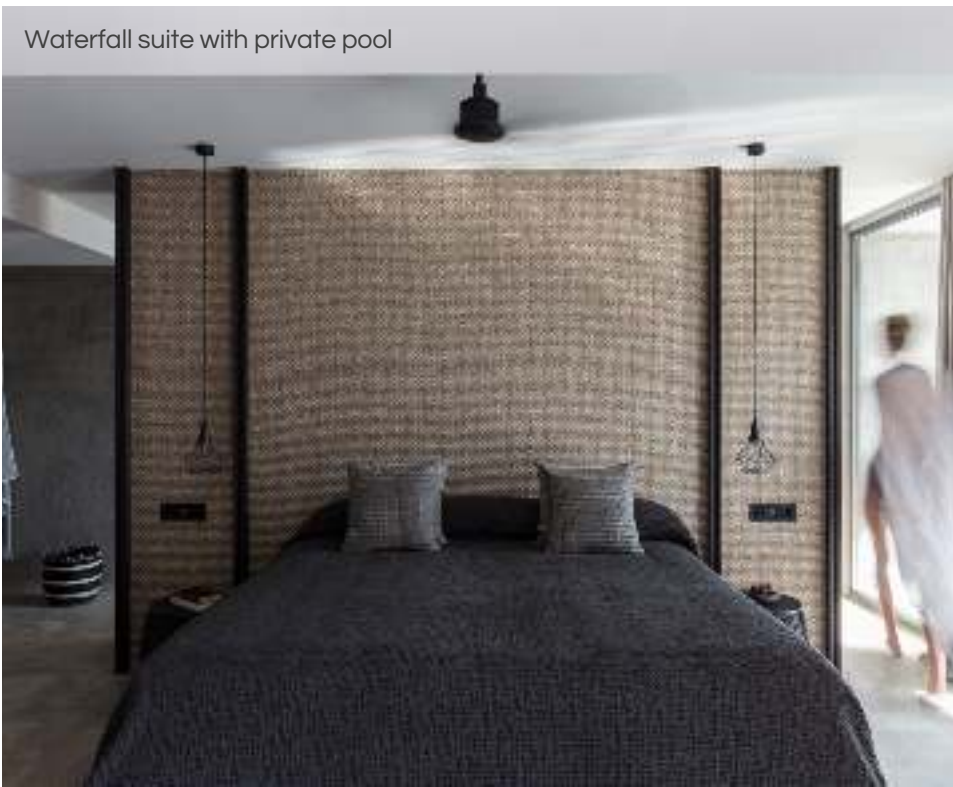
Upper-deck ocean-view room



Junior suite  
sea-view lower-deck



Waterfall suite with private pool



Superior suite sharing pool  
sea-view & ocean-view



Ocean view bungalow



Upper deck Infinity  
blue room

